

RYER ISLAND

S LOUGH



THIS PORTION OF MAP WAS MA
RECORDED IN THE OFFICIAL RECORD

This map has been examined for conformance with the requirements of Chapter 15 of Division 3 of the Business and Professions Code this 7th day of FEBRUARY, 1960

Wm Jones
COUNTY SURVEYOR 2592

Filed for record this 7th day of Feb, 1960, at 10:30 AM in Book 7 of surveys at page 63, at the request of William Beinhauer

M.E. Buckmaster
COUNTY RECORDER
SOLANO COUNTY

RESURVEY OF S. & O. 544
PORTION OF SECS. 11 & 14 T. 4 N. R. 3 E. M. D. B. & M.
ADJACENT TO RYER ISLAND, SOLANO CO., CALIF.

SURVEYED FOR HAL GOULD et al
WILLIAM BEINHAUER L. S. 1818 ISLETON, CALIF.
OCT 1960 SCALE 1" = 100'

RESURVEY OF S. 8. 0. 544
 PORTION OF SECS. 11 & 14 T. 4 N. R. 3 E. M. D. B. M.
 ADJACENT TO RYER ISLAND, SOLANO CO., CALIF.
 SURVEYED FOR HAL GOULD et al
 WILLIAM BEINHAUER L.S. 1818 ISLETON, CALIF.
 OCT. 1960 SCALE 1" = 100'

COUNTY RECORDER
 SOLANO COUNTY

Wm E. Beinhauer

Request of William Beinhauer

Filed for record this 7th day of Feb, 1961, at 1:30 AM in Book 1 of surveys at page 63 of the

COUNTY SURVEYOR

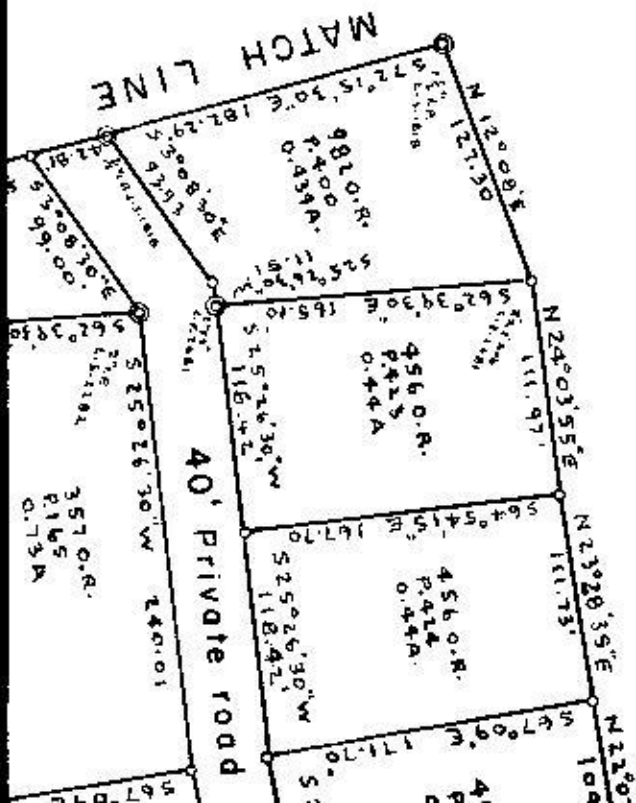
2592

Wm E. Beinhauer

This map has been examined for conformance with the
 requirements of Chapter 15 of Division 3 of the Business
 Professions Code this 7th day of FEBRUARY, 1960

This map has been examined for conformance with the

THIS PORTION OF MAP WAS MADE
 RECORDED IN THE OFFICIAL RECORD



RYE

S